

KRPGC-LCN

溢流阀

说明 DESCRIPTION

A cartridge-style smooth-andquiet balanced piston relief valve
平稳响应型, 先导滑阀式溢流阀

工作 OPERATION

The valves are normally closed, pressure-limiting valves used to protect hydraulics components from pressure transients. When the pressure at the inlet (port ①) reaches the valve setting, the valve starts to open to tank (port ②), throttling flow to limit the pressure rise. The valves are accurate, have low pressure rise flow they are smooth and quiet, and are moderately fast.

Back pressure on the tank port ② is directly additive to the valve setting at a 1:1ratio.

先导式滑阀型溢流阀用于保护系统的压力瞬时过载。当①口压力超过设定值时, ①口到②口溢流过载, 限制压力升高。②口背压会按 1:1 叠加到阀的设定压力上。

技术参数 SPECIFICATIONS

最大工作压力(Max. Operating Pressure): 350bar

流量(Capacity): 200 L/min.

内泄漏(Internal Leakage): 50 cc/min. at 70 bar

响应时间(Response Time- Typical): 10 ms

弹簧调压范围(Standard Spring Ranges):

A 7 to 210 bar, preset 预设定:70bar	B 3.5 to 105 bar, preset 预设定:70bar
C 10.5 to 420 bar, preset 预设定:70bar	D 1.7 to 55 bar, preset 预设定:28bar
E 1.7 to 28 bar, preset 预设定:14bar	W 10.5 to 315 bar, preset 预设定:70bar
N 4 to 55 bar, preset 预设定:28bar	Q 4 to 28 bar, preset 预设定:14bar

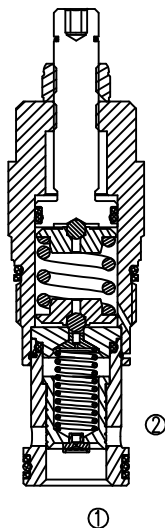
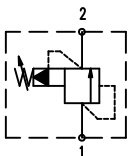
温度(Temperature): -40° F to +250° F(-40° C to +120° C)

油液(Fluids): Mineral-based fluids with viscosities of 7.4 to 420 cSt. (矿物油粘度)

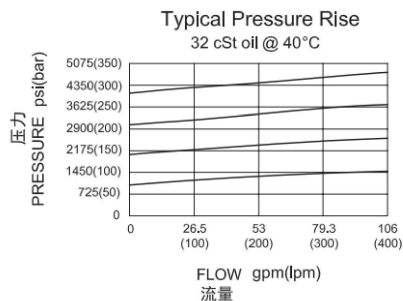
插孔(Cavity): T-3A

阀块材料(Body Material): Steel & Ductile iron rated to 350bar 钢和球铁允许使用最大压力350bar

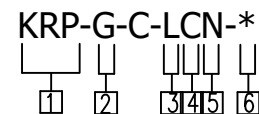
符号 SYMBOL



压力-流量曲线 PRESSURE DROP VS. FLOW



订货代号 TO ORDER



- | | |
|--|---|
| <p>① 功能
KRP= 先导式溢流阀
Smooth-and-quiet
Pilot-operated Relief Valve</p> <p>② 流量 Capacity
G=200L/min</p> <p>③ 控制方式 Control
L=Standard Screw Adjustment
K=Handknob</p> <p>⑤ 油封 Seal Kits
N= 丁晴橡胶 Buna N
V= 氟橡胶 Viton</p> <p>⑥ 阀块油口 Body Porting
空白 Blank= 不带阀块 None
8T=SAE8
10T=SAE10
3G=G 3/8
4G=G 1/2</p> | <p>④ 弹簧调压范围 Spring Ranges
A=100-3000psi (7-210bar)
Preset:1000psi (70bar)
B=50-1500psi (3.5-105bar)
Preset:1000psi (70bar)
C=150-6000psi (10.5-420bar)
Preset:1000psi (70bar)
D=25-800psi (1.7-55bar)
Preset:400psi (28bar)
E=25-400psi (1.7-28bar)
Preset:200psi (14bar)
W=150-4500psi (10.5-315bar)
Preset:1000psi (70bar)
N=60-800psi (4-55bar)
Preset:400psi (28bar)
Q=60-400psi (4-28bar)
Preset:200psi (14bar)
Factory Pressure setting established at 15L/min;
工厂的设定是指溢流阀开启 (流量为 15L/min) 时的压力 ;</p> |
|--|---|

安装尺寸 INSTALLATION DIMENSIONS

